



**India Meteorological Department
(Ministry of Earth Sciences)**

NATIONAL BULLETIN NO. 1 (AS/02/2023)

TIME OF ISSUE: 1315 HOURS IST

DATED: 30.09.2022

FROM: INDIA METEOROLOGICAL DEPARTMENT (FAX NO. 24643965/24699216/24623220)

TO: CONTROL ROOM, NDM, MINISTRY OF HOME AFFAIRS (FAX.NO. 23093750)

CONTROL ROOM NDMA (FAX.NO. 26701729)

CABINET SECRETARIAT (FAX.NO.23012284, 23018638)

PS TO HON'BLE MINISTER FOR S & T AND EARTH SCIENCES (FAX NO.23316745)

SECRETARY, MOES (FAX NO. 24629777)

H.Q. (INTEGRATED DEFENCE STAFF AND CDS) (FAX NO. 23005137/23005147)

DIRECTOR GENERAL, DOORDARSHAN (23385843)

DIRECTOR GENERAL, AIR (23421105, 23421219)

PIB MOES (FAX NO. 23389042)

UNI (FAX NO. 23355841)

D.G. NATIONAL DISASTER RESPONSE FORCE (NDRF) (FAX NO. 26105912, 2436 3260)

DIRECTOR, PUNCTUALITY, INDIAN RAILWAYS (FAX NO. 23388503)

CHIEF SECRETARY, KERALA (FAX NO. 0471-2327176)

ADMINISTRATOR, LAKSHADWEEP ISLANDS (FAX NO. 0413-262184)

CHIEF SECRETARY, GOA (FAX NO. 0832-2415201)

CHIEF SECRETARY, KARNATAKA (FAX NO. 080-22258913)

CHIEF SECRETARY, MAHARASHTRA (FAX NO. 022- 22028594)

CHIEF SECRETARY, GUJARAT (FAX NO. 079-23250305)

CHIEF SECRETARY, DAMAN & DIU (FAX NO. 0260-2230775)

CHIEF SECRETARY, DADRA & NAGAR HAVELI (FAX NO. 0260-2645466)

CHIEF SECRETARY, ODISHA (FAX NO. 0674-2536660)

CHIEF SECRETARY, WEST BENGAL (FAX NO. 033-22144328)

CHIEF SECRETARY, CHHATTISGARH (FAX NO. 0771-2221206)

CHIEF SECRETARY, JHARKHAND (FAX NO. 0651-2400255)

CHIEF SECRETARY, BIHAR (FAX NO. 0612-2217085)

Sub: A) Depression over Eastcentral Arabian Sea off south Konkan-Goa coasts

B) Well marked low pressure area over Northwest Bay of Bengal

A) Depression over Eastcentral Arabian Sea off south Konkan-Goa coasts

A depression formed over Eastcentral Arabian Sea off south Konkan-Goa coasts at 0830 hours IST of today, the 30th September, 2023 near latitude 15.9°N and longitude 72.8°E about 110 km west-northwest of Panjim (Goa), 130 km south-southwest of Ratnagiri (Maharashtra) and 250 km northwest of Honavar (Karnataka).

It is likely to move east-northeastwards and cross Konkan-Goa coasts between Panjim and Ratnagiri by tonight.

Spatial rainfall distribution: Isolated: <25%, A few: 26-50%, Many: 51-75%, Most: 76-100%

Rainfall amount (mm): Heavy rain: 64.5 – 115.5, Very heavy rain: 115.6 – 204.4, Extremely heavy rain: 204.5 or more.

Warnings:

(i) Rainfall (warning graphics enclosed)

South Konkan-Goa:

Light/moderate rainfall at most places with heavy to very heavy rainfall at a few places and extremely heavy rainfall at isolated places is very likely on 30th September and 1st October, 2023.

North Konkan:

Light/moderate rainfall at most places with heavy rainfall at isolated places is very likely on 30th September and 1st October, 2023.

Costal Karnataka:

Light/moderate rainfall at most places with heavy to very heavy rainfall at isolated places on 30th September and isolated heavy rainfall on 1st October, 2023.

South Madhya Maharashtra:

Light/moderate rainfall at most places with heavy to very heavy rainfall at isolated places on 30th September and 1st October, 2023.

Kerala:

Light/moderate rainfall at most places with heavy to very heavy rainfall at isolated places on 30th September, 2023.

(ii) Wind warning:

Squally wind speed reaching 40-50 kmph gusting to 60 kmph is prevailing over Eastcentral Arabian Sea along & off Maharashtra-Goa-Karnataka coasts. It is likely to become **45-55 kmph gusting to 65 kmph** from evening of today, the 30th September, 2023 and prevail during subsequent 24 hours.

(iii) Sea condition

Rough to very rough sea condition is very likely over Eastcentral Arabian Sea along & off Maharashtra-Goa-Karnataka coasts on 30th September and 1st October, 2023.

(iv) Fishermen Warning (warning graphics enclosed)

Fishermen are advised not to venture into Eastcentral Arabian Sea along & off Maharashtra-Goa-Karnataka coasts on 30th September and 1st October, 2023.

Spatial rainfall distribution: Isolated: <25%, A few: 26-50%, Many: 51-75%, Most: 76-100%

Rainfall amount (mm): Heavy rain: 64.5 – 115.5, Very heavy rain: 115.6 – 204.4, Extremely heavy rain: 204.5 or more.

B) Well marked low pressure area over Northwest Bay of Bengal

The Well Marked Low Pressure Area over Northwest Bay of Bengal persisted over the same region at 0830 hours IST of today, the 30th September, 2023. It is likely to move west-northwestwards across north Odisha & adjoining West Bengal coasts during next 24 hours.

Warnings:

(i) Rainfall (warning graphics enclosed)

30th September:

Light/moderate rainfall at most places with heavy to very heavy rainfall at isolated places is very likely over Gangetic West Bengal, North Odisha and Jharkhand.

01st October:

Light/moderate rainfall at most places with heavy to very heavy rainfall at isolated places is very likely over North Odisha, North Chhattisgarh and Jharkhand; isolated heavy rainfall over Gangetic West Bengal and Bihar.

2nd October:

Light/moderate rainfall at most places with heavy to very heavy rainfall at isolated places is very likely over North Odisha, Bihar, Jharkhand, Sub-Himalayan west Bengal & Sikkim; isolated heavy rainfall over Gangetic West Bengal.

(ii) Wind warning:

Squally wind speed reaching 40-50 kmph gusting to 60 kmph is prevailing and likely over North Bay of Bengal along & off North Odisha -West Bengal and adjoining Bangladesh coasts during 30th September to 1st October.

(iii) Sea condition

Rough sea condition is very likely over North Bay of Bengal along & off North Odisha - West Bengal and adjoining Bangladesh coasts during 30th September to 1st October, 2023.

(iv) Fishermen Warning (warning graphics enclosed)

Fishermen are advised not to venture into North Bay of Bengal along & off North Odisha - West Bengal and adjoining Bangladesh coasts till 1st October, 2023.

The system is under continuous surveillance and the next message will be issued at 1430 hours IST of today, the 30th September, 2023.

(Ananda Kumar Das)
Scientist F, Cyclone Warning, New Delhi

Copy to: ACWC Mumbai/ACWC Kolkata/ ACWC Chennai/CWC Ahmedbad/ CWC Bhubaneswar/CWC Visakhapatnam/ CWC Thiruvanthapuram

Spatial rainfall distribution: Isolated: <25%, A few: 26-50%, Many: 51-75%, Most: 76-100%

Rainfall amount (mm): Heavy rain: 64.5 – 115.5, Very heavy rain: 115.6 – 204.4, Extremely heavy rain: 204.5 or more.



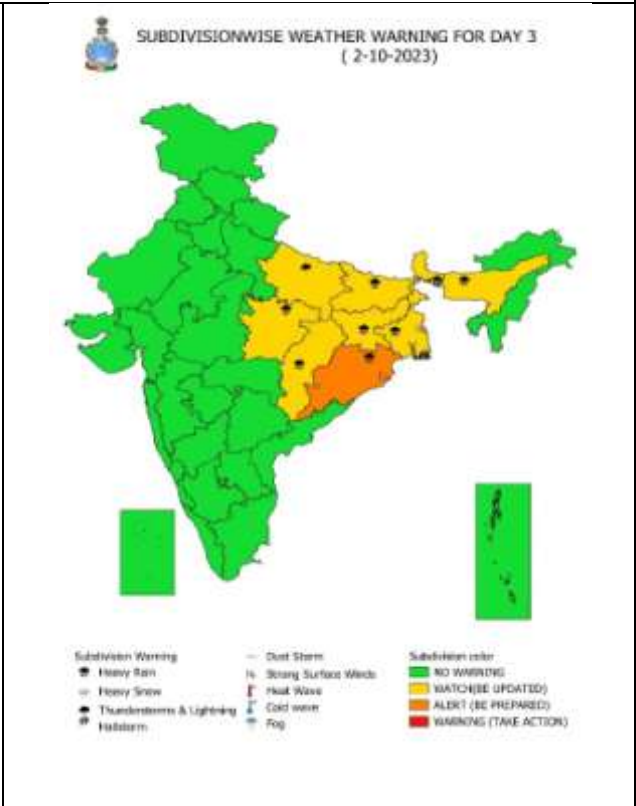
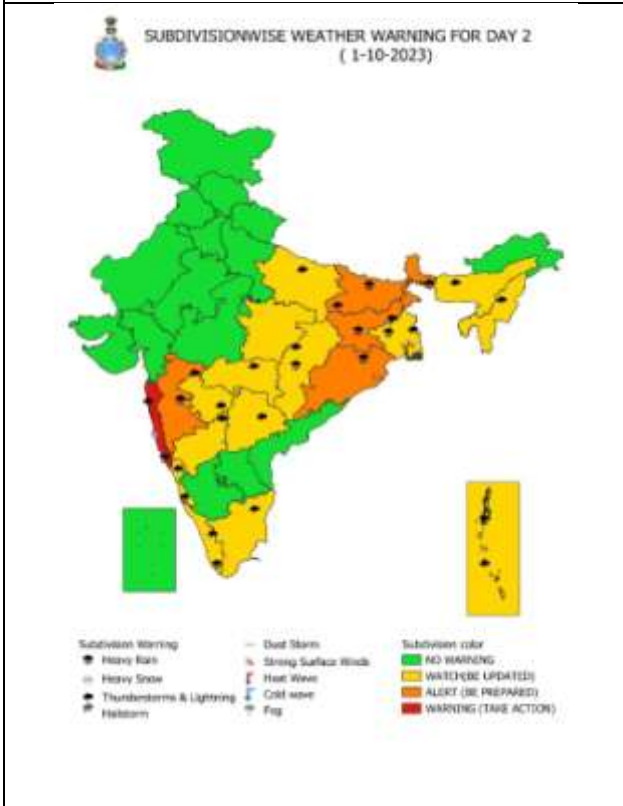
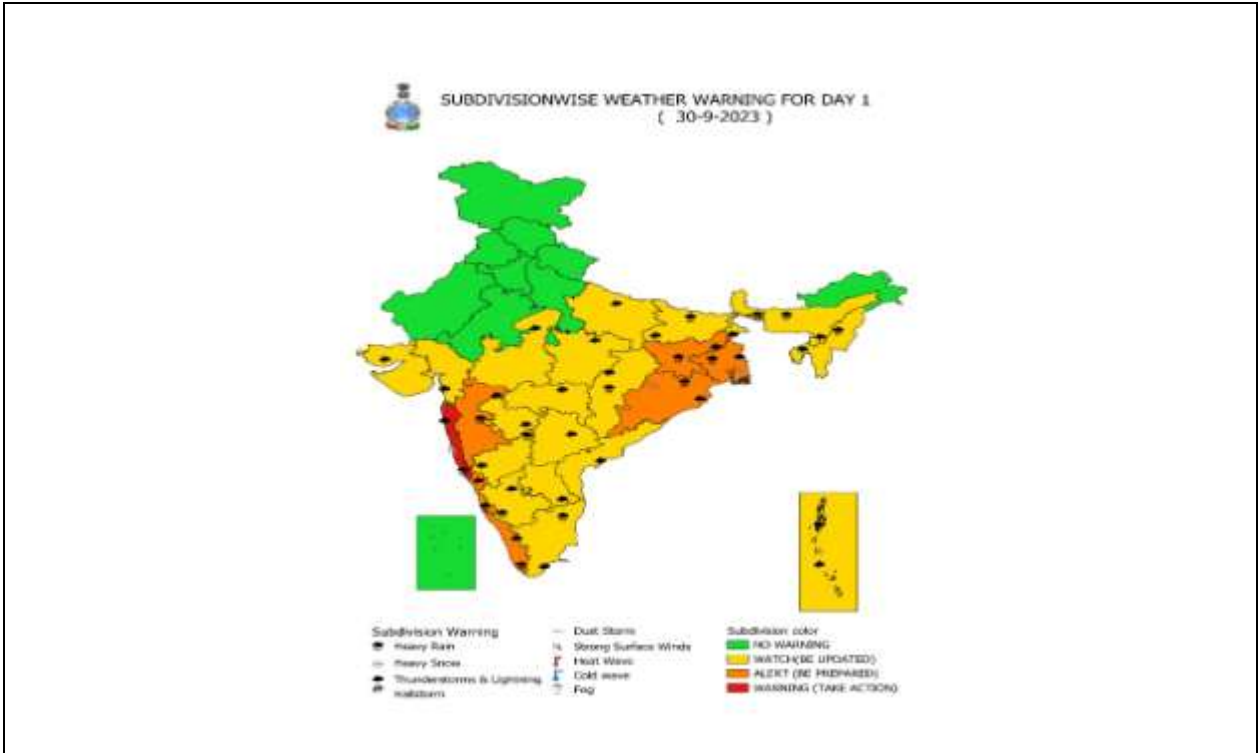
OBSERVED AND FORECAST TRACK OF DEPRESSION OVER EASTCENTRAL ARABIAN SEA AND LOCATION OF WELL MARKED LOW PRESSURE AREA OVER NORTH WEST BAY OF BENGAL BASED ON 0300 UTC (0830 IST) OF 30Th SEPTEMBER, 2023.



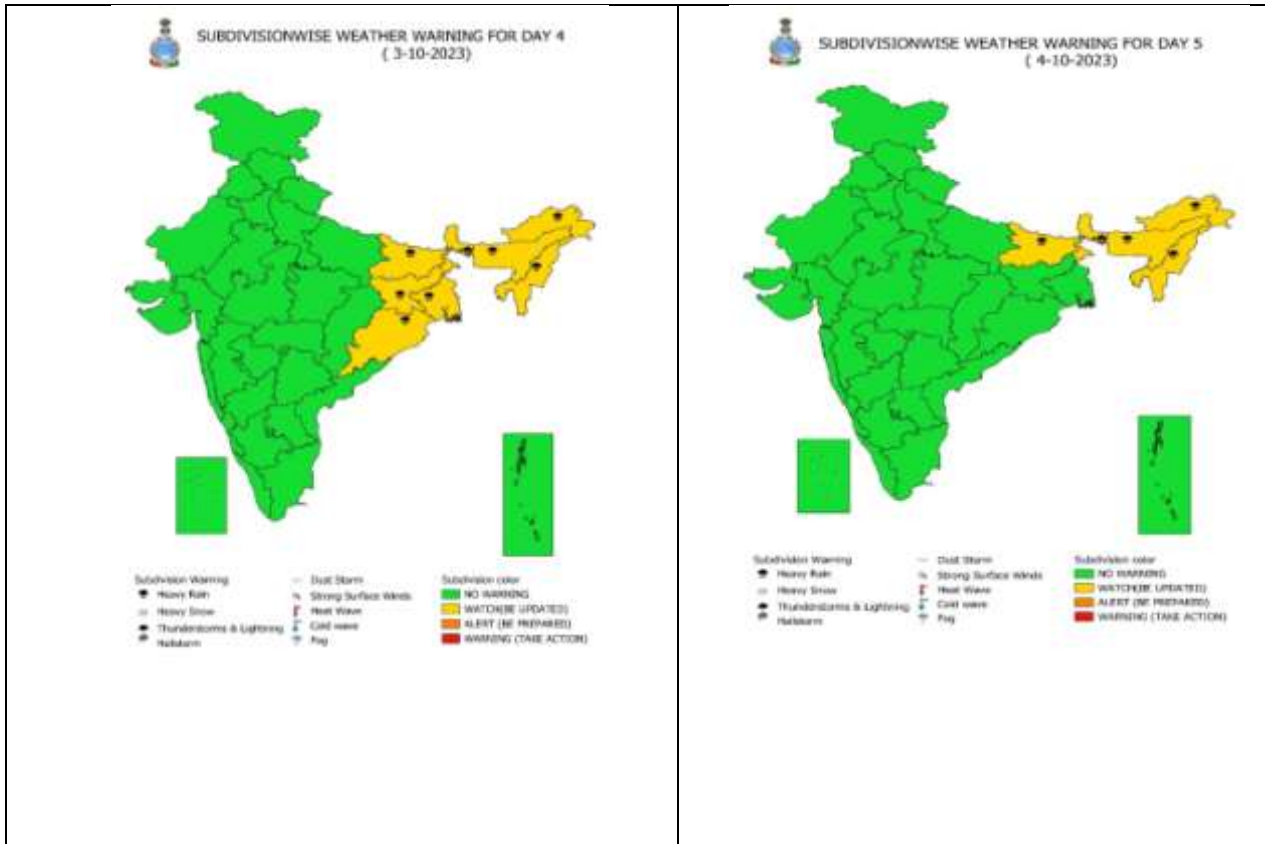
DATE/TIME IN UTC
 IST=UTC + 0530
 L: LOW PRESSURE AREA
 WML: WELL MARKED LOW PRESSURE AREA
 D: DEPRESSION (17-27 KT)
 DD: DEEP DEPRESSION (28-33 KT)
 CS: CYCLONIC STORM (34-47 KT)
 SCS: SEVERE CYCLONIC STORM (48-63KT)
 VSCS: VERY SEVERE CYCLONIC STORM (64-89 KT)
 ESCS: EXTREMELY SEVERE CYCLONIC STORM (90-119 KT)
 SuCS: SUPER CYCLONIC STORM (≥ 120 KT)

●	LES	<p>WARNING</p> <p>WARNING (TAKE ACTION)</p> <p>ALERT (BE PREPARED)</p> <p>WATCH (BE UPDATED)</p> <p>NO WARNING (NO ACTION)</p>
⊙	34-47	
⊙	≥ 48	
■	OBS	
■	FOR	
▲	CONE OF UNCERTAINTY	

Spatial rainfall distribution: Isolated: <25%, A few: 26-50%, Many: 51-75%, Most: 76-100%
 Rainfall amount (mm): Heavy rain: 64.5 – 115.5, Very heavy rain: 115.6 – 204.4, Extremely heavy rain: 204.5 or more.

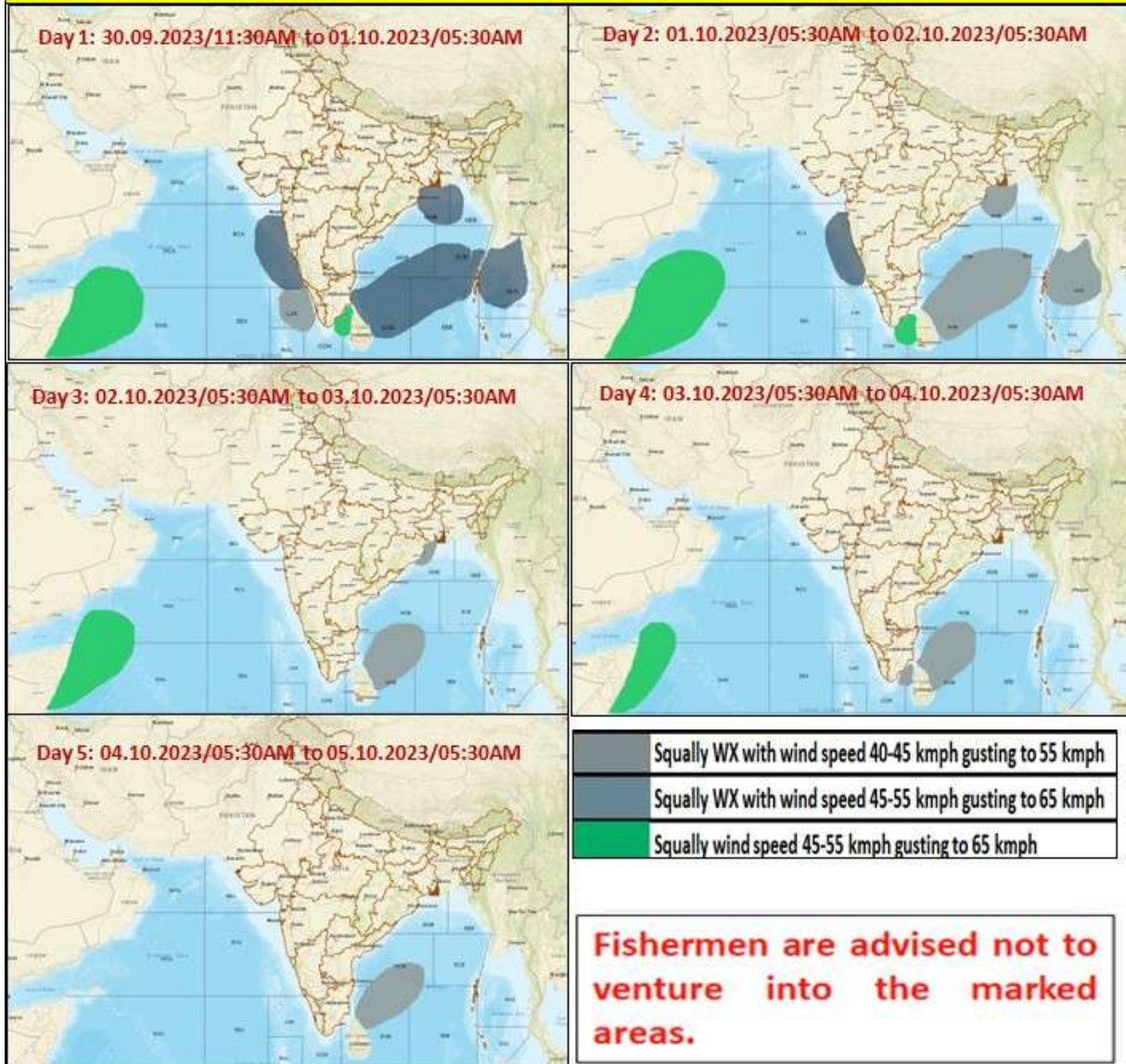


Spatial rainfall distribution: Isolated: <25%, A few: 26-50%, Many: 51-75%, Most: 76-100%
Rainfall amount (mm): Heavy rain: 64.5 – 115.5, Very heavy rain: 115.6 – 204.4, Extremely heavy rain: 204.5 or more.



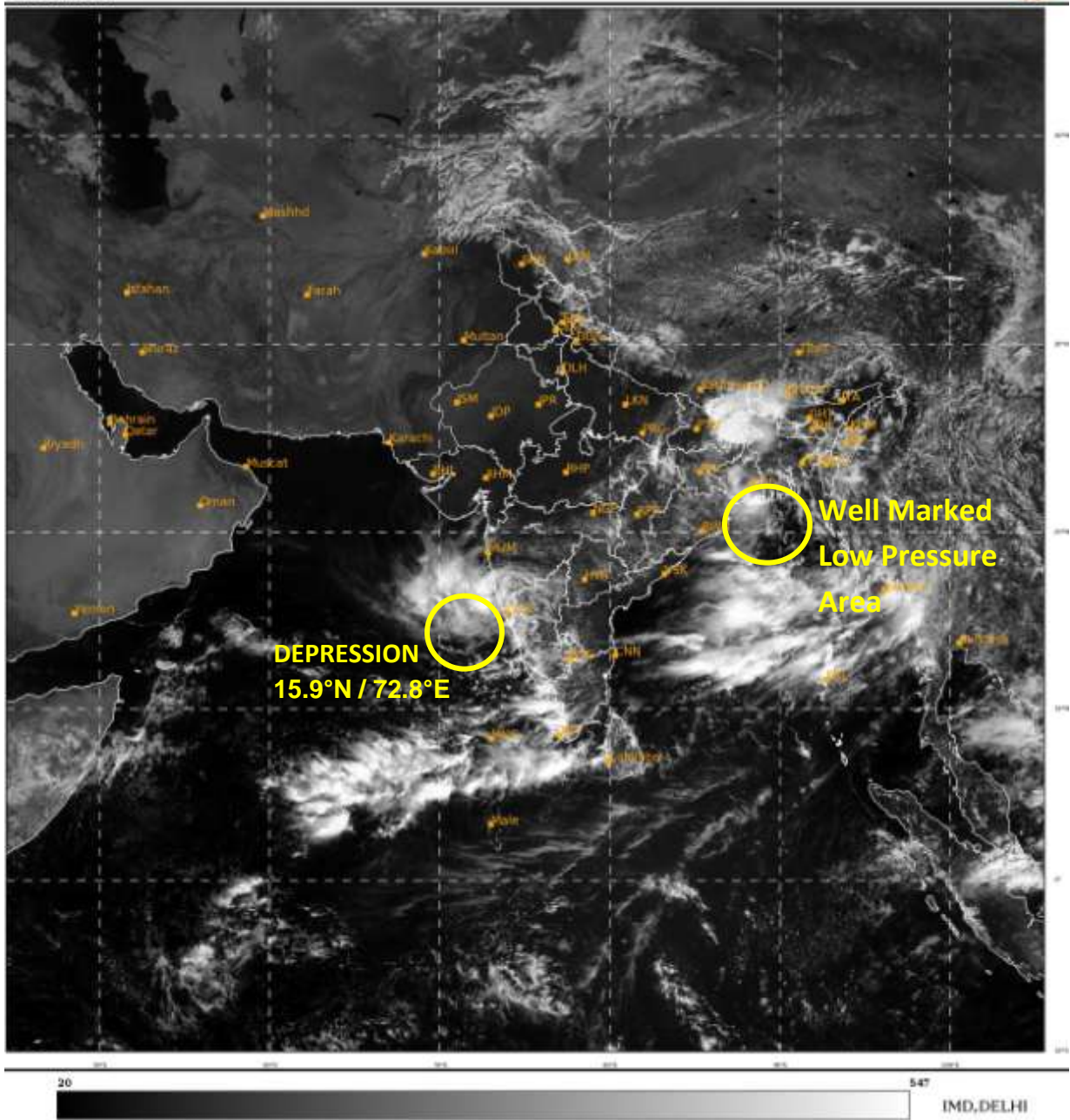
Spatial rainfall distribution: Isolated: <25%, A few: 26-50%, Many: 51-75%, Most: 76-100%
Rainfall amount (mm): Heavy rain: 64.5 – 115.5, Very heavy rain: 115.6 – 204.4, Extremely heavy rain: 204.5 or more.

Fishermen warning graphics



Spatial rainfall distribution: Isolated: <25%, A few: 26-50%, Many: 51-75%, Most: 76-100%

Rainfall amount (mm): Heavy rain: 64.5 – 115.5, Very heavy rain: 115.6 – 204.4, Extremely heavy rain: 204.5 or more.



Spatial rainfall distribution: Isolated: <25%, A few: 26-50%, Many: 51-75%, Most: 76-100%
Rainfall amount (mm): Heavy rain: 64.5 – 115.5, Very heavy rain: 115.6 – 204.4, Extremely heavy rain: 204.5 or more.